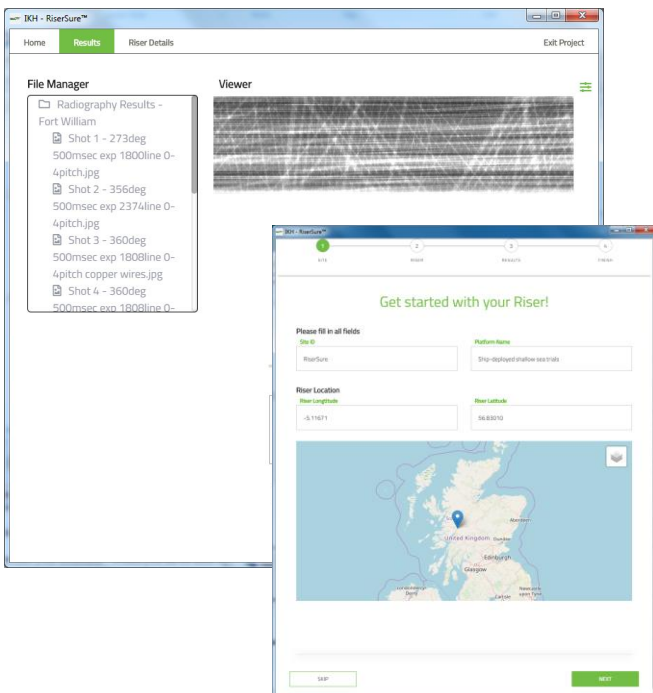


ENSURING INTEGRITY OF FLEXIBLE RISERS TO EXTEND SERVICE LIFE

Flexible riser failure is increasing (typically flexible risers are being used outside their forecast service life), is costly and it damages the environment.

RiserSure™ is a newly developed system for assessing the condition of flexible riser pipes widely used in offshore oil and gas production without the need for diver or ROV intervention.



RiserSure™ provides:

- Easy to use interface
- Digital radiographic images on all layers of riser
- Images in real-time
- Fast circumferential scanning; complete within 20 minutes
- Operators ability to comply with the 2013 EU Offshore Safety Directive

Contact:

 <http://www.risersure.eu/>

 +44 (0) 1223 893 209

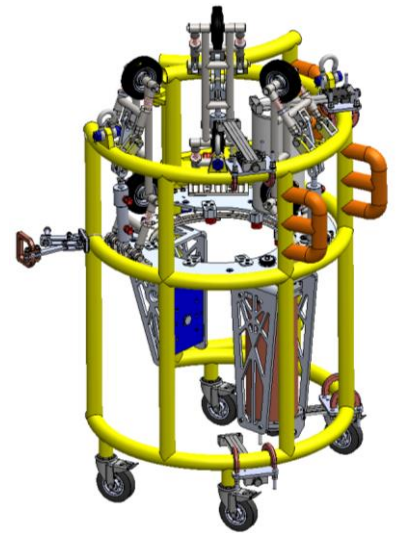
 enquiries@risersure.eu



RiserSure

North Wing, Old Livery
Hildersham Road, Cambridge
CB21 6DR, United Kingdom

- Low cost flexible riser inspection system for the splash zone
- Digital radiography allows inspection of all riser layers
- 8x faster than existing UT inspection methods
- No need for riser downtime
- Accommodates riser diameters from 100mm to 600mm



Technical Specifications

Target Component:	
Typical Riser diameter	200 - 270mm diameter (Default setup on RiserSure™). <i>Other diameters accommodated by custom adaptors.</i>
Max. internal metal layer thickness	60-80mm
Scanner deployment:	
Deployment mechanism	Integrated overhead winch system or working class ROV.
Deck mobility	Four castor wheels
Current operating depth	100m
Scanner:	
Construction	Stainless steel 316L to be compatible with subsea requirements (BS EN ISO 13628:1:2005).
Scanner size	114cm overall diameter, 110cm height
Total weight	170kg
Topside supplies required	Pneumatic (70 psi to 150 psi), hydraulic and 230VAC 50Hz Mains voltage
Inspection method:	
Radiography Technique	Double Wall Single Image
Stand-off distance	20mm between detector/source from riser surface
Gamma radiography energy	Ir192 20Ci - 30Ci
Active detection area	250mm
Minimum scan speed	0.03 rpm
Typical image acquisition time	18 minutes for a 220mm diameter x 250mm long riser section

Contact:

 <http://www.risersure.eu/>

 +44 (0) 1223 893 209

 enquiries@risersure.eu



Co-financed by the Connecting Europe Facility of the European Union